

# **Mosaic Fertilizer Integrated Land Management Plan Restoration Review Agency Meeting**

***Meeting Summary  
September 19, 2012***

## **Participants:**

Clayton Robertson, VHB

Sean Murray, VHB

Jeff Stewart, Mosaic

Jorge Oliver, Mosaic

Judy Milam, Milam Environmental

Steve Easton, Milam Environmental

Peter Owens, HCEPC

Richard Batty, HCEPC

Mike Stevenson, Hillsborough County

Kevin Wyko, Hillsborough County

Lauren Greenfield, FDEP

---

Handouts provided to the meeting attendees included the following:

- 1) Restoration Review Agency Meeting Agenda
- 2) Site aerial including the relocated Archie Creek and associated mitigation wetlands along with many of the restored parcels associated with the Integrated Land Management Plan (ILMP)
- 3) A table summarizing the September 2012 Archie Creek Relocation Mitigation quantitative monitoring data.

Clayton Robertson welcomed the participants to the meeting and requested sign-in of the attendees. An introductory statement regarding the Development Order and the role of the Restoration Review Agencies' (RRA) was presented.

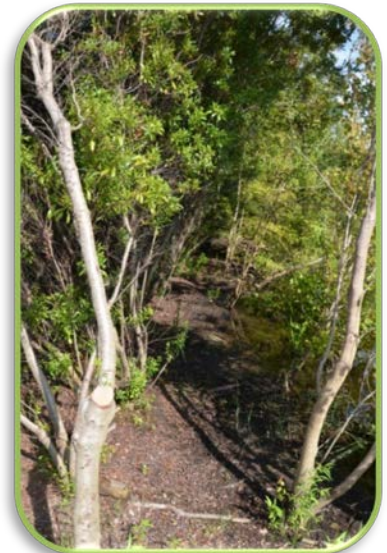
Mr. Robertson provided a brief presentation which included a "time-lapse" comparison of the initial planting areas with the current condition of the mitigation areas. An overview and update was presented on the status of the Annual Report submittal, Annual Quantitative Monitoring, and implementation of the Alternative Mitigation Plan (aka Corrective Action Plan). Mr. Robertson, with the assistance of Sean Murray, provided additional details on the water level and vegetation data collected during the September 2012 quantitative monitoring event. The meeting continued with a field inspection of the mitigation areas and restoration parcels.

***North Mitigation Area***



The field inspection by the RRA team entered at the west end of the relocated Archie Creek at Old U.S. 41 and progressed along the “south leg” of the relocated Creek. The 2011 tree plantings associated with the Alternative Mitigation Plan along the creek bank, within the “Southwest Wedge” and along the berm between the North Mitigation Area and Archie Creek were inspected for survival and overall health. In addition, meeting attendees entered the South Mitigation Area at the southwest corner to inspect the result of the wax myrtle “thinning” and inspect the observable affect of the prior crowding of the wetland tree species by the wax myrtle. The team inspected the South Mitigation Area at the northern monitoring transect, Transect B.

Channeled apple snails were briefly discussed, however, it appeared the on-site population was adequately controlled by the wading bird population that occupies the site.



***Wax Myrtle Thinning***

The meeting attendees acknowledged survival of the trees planted in 2011 appeared to be approximately 95% after the first year although a number of trees located on the southern quarter of the berm exhibited signs of stress due



***RRA Team-North Mitigation Area***

to particularly high water levels and extended inundation. A discussion concerning the possible release from monitoring of part or all of Archie Creek and the mitigation wetlands ensued between Jeff Stewart (Mosaic), Clayton Robertson (VHB), Sean Murray (VHB), Richard Batty (HCEPC) and Lauren Greenfield (FDEP). Mr. Batty and Ms. Greenfield both acknowledged the North Mitigation Area had developed into a successful herbaceous wetland and the South Mitigation Area was a successful forested wetland. Each acknowledged a willingness to release these areas from

vegetation monitoring requirements. However, due to the young age of the trees and signs of what appeared to be hydrological stress exhibited by some trees installed as part of the Alternative Mitigation Plan, both agencies requested monitoring continue for at least one more year within these areas, including the banks of Archie Creek and the Southwest Wedge Wetland.



***South Mitigation Area***

expressed concern regarding the cessation of water level data collection unless data loggers were collecting redundant data. Clayton Robertson and Sean Murray agreed to review the accumulated data and the monitoring station locations and provide a proposed modification of the number of sites or monitoring frequency for which water level data is collected, if appropriate.

The field inspections proceeded to the Northeast A, Northwest A and Northwest B Restoration Areas. Overall it was acknowledged these areas were functioning as successful upland and wetland restorations through the on-going land management plan implemented by Mosaic.



All present appeared satisfied with the overall condition and continuing success of the mitigation and restoration sites, particularly with the limited exotic infestation for a flowing system.

Richard Batty agreed to provide Mosaic with correspondence documenting the EPC's position on the mitigation success and monitoring program modification and Clayton Robertson agreed to distribute a summary of the activities of the Annual Restoration Review Agency Meeting.

***RRA Team-Northwest A Mitigation Area***